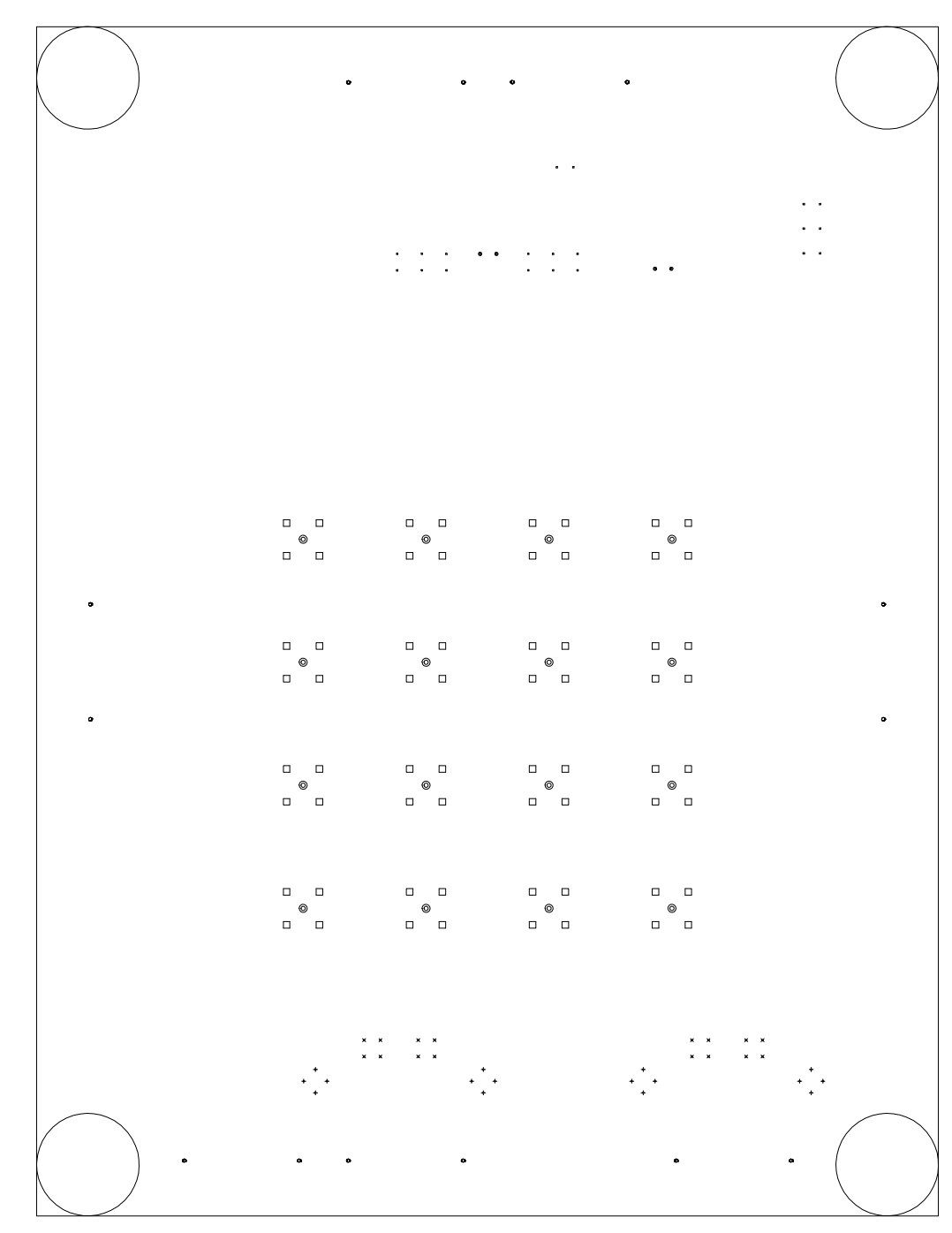
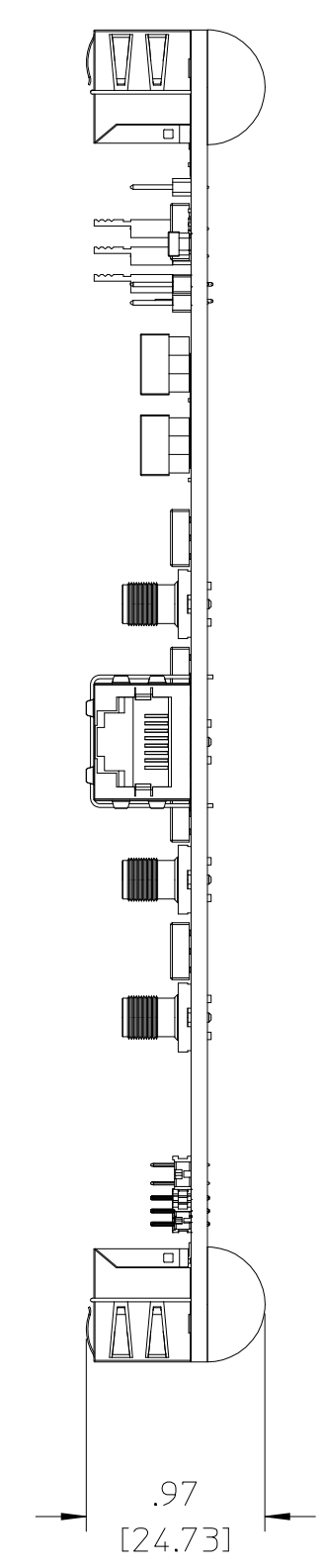
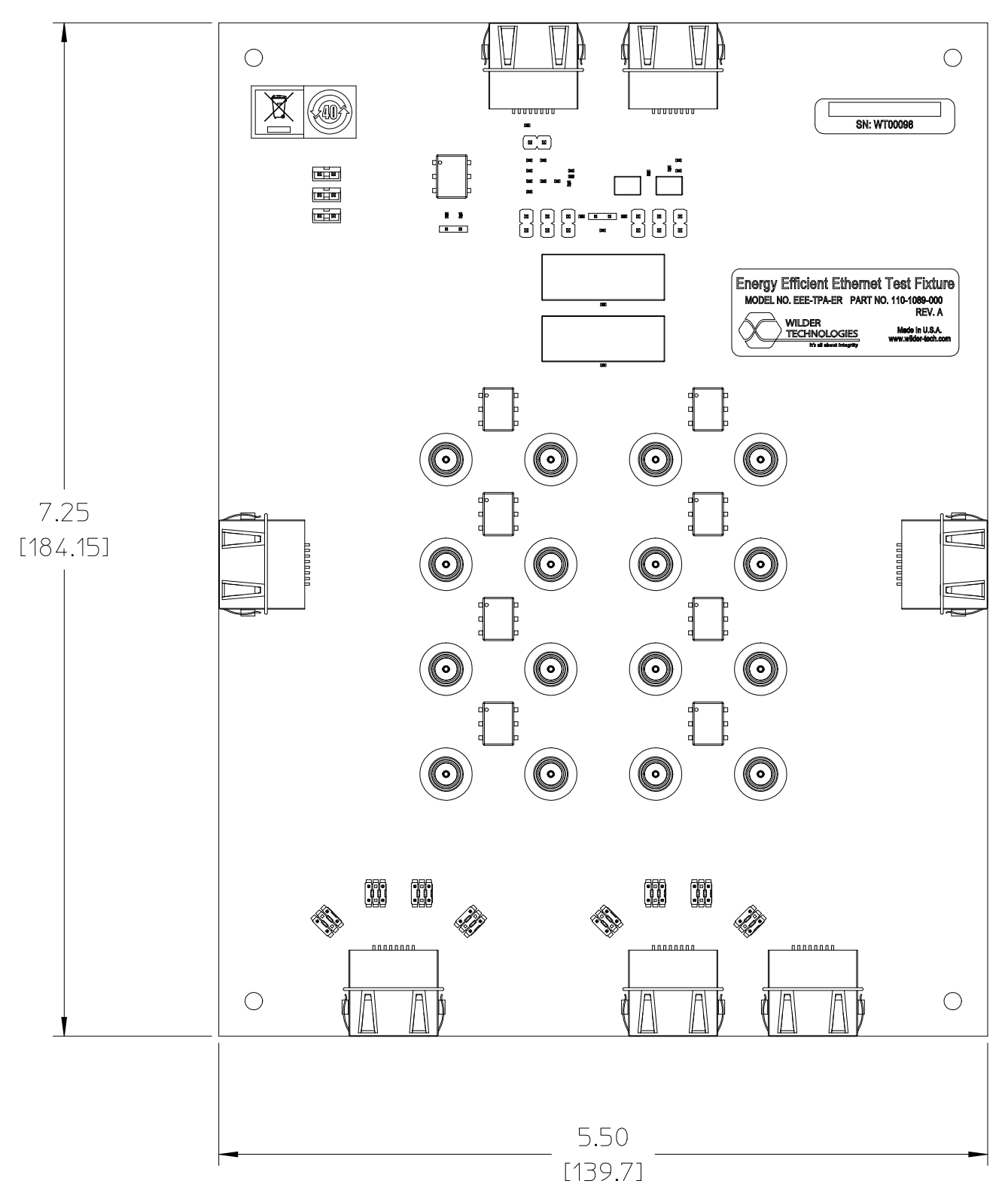


THIS DOCUMENT CONTAINS PROPRIETARY INFORMATION AND IS THE PROPERTY OF WILDER TECHNOLOGIES. THIS INFORMATION SHALL NOT BE REPRODUCED, TRANSFERRED TO OTHER DOCUMENTS, DISCLOSED TO OTHERS FOR MANUFACTURING OR ANY OTHER PURPOSE WITHOUT WRITTEN PERMISSION FROM WILDER TECHNOLOGIES.

REVISIONS				
REV	AUTH	DESCRIPTION	APVD DATE	CHK DATE
A	XXXX	INITIAL RELEASE	TD	10/16/2012



- NOTE: UNLESS OTHERWISE SPECIFIED
1. INTERPRET DIMENSIONS AND TOLERANCES PER ANSI Y14.5.
 2. REFER TO USERS MANUAL FOR DETAILED MECHANICAL AND ELECTRICAL SPECIFICATIONS.

UNLESS OTHERWISE SPECIFIED DIMENSIONS ARE INCHES (METRIC)	.XXX ± .005 ± .127 ±		6101A East 18th St. Vancouver, WA 98661	
	.XX ± .01 ± .25 ±		Tel: 360-859-3041 Fax: 360-859-3105 www.wilder-tech.com	
X ± .02 ± .3 ±		DRAWN BY: T. DELUCCO	DATE: 10/16/2012	
ANGLE ± 1° ±		CHECKED BY:	DATE:	
MATERIAL:		APPROVED BY:	DATE:	
FINISH:		DESCRIPTION: CUSTOMER REFERENCE DRAWING ASSY, ECB, EEE, 100/1000-BASE-TE		
SIZE	PART NUMBER:	REV		
D	110-1089-000	A		
SCALE: 1:1	DO NOT SCALE DRAWING	SHEET 1 OF 1		