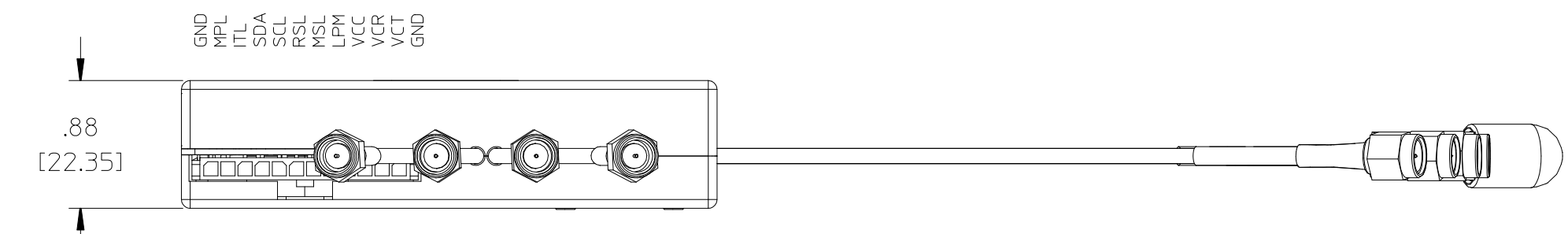
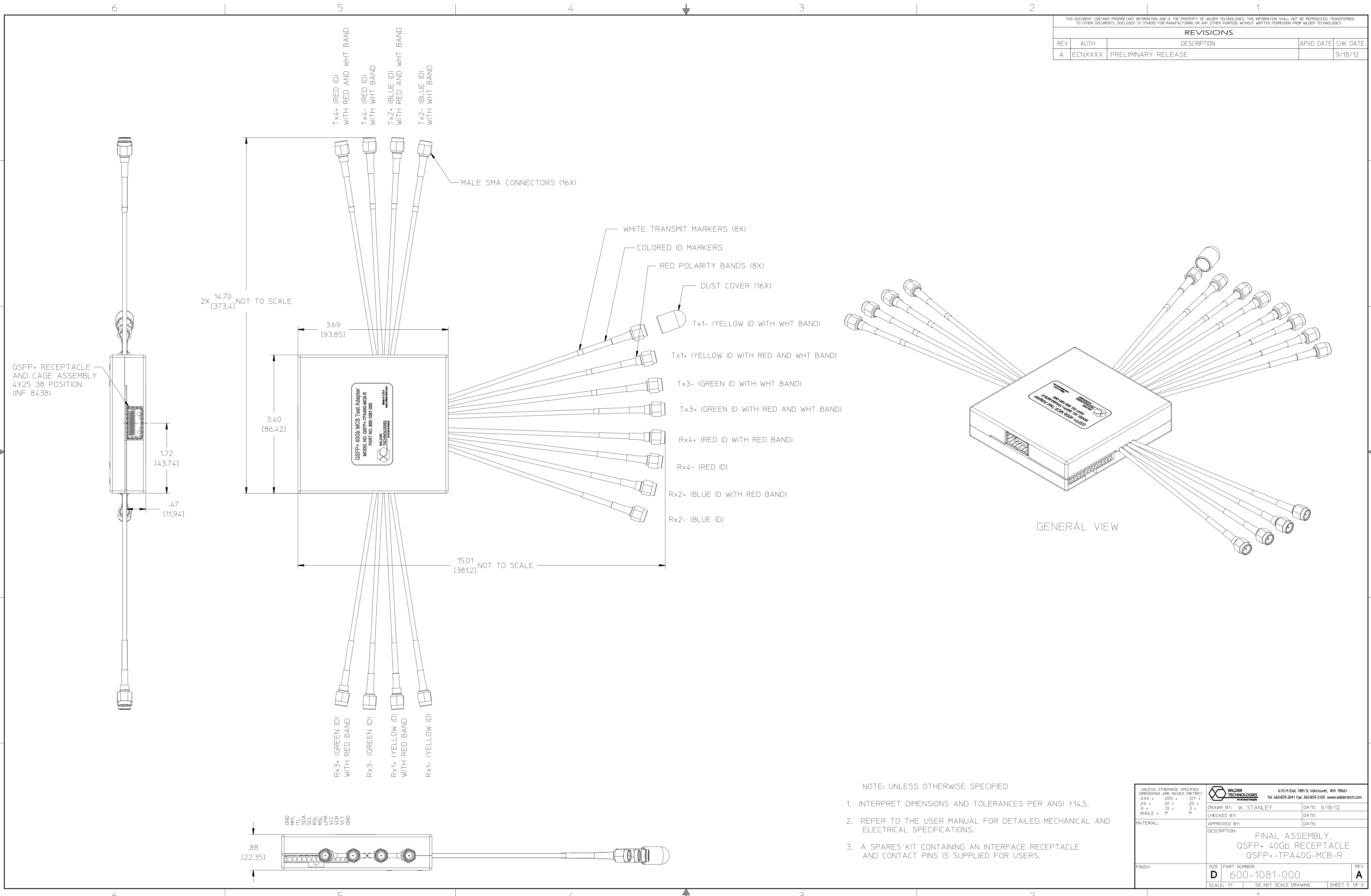


THIS DOCUMENT CONTAINS PROPRIETARY INFORMATION AND IS THE PROPERTY OF WILDER TECHNOLOGIES. THIS INFORMATION SHALL NOT BE REPRODUCED, TRANSFERRED TO OTHER DOCUMENTS, DISCLOSED TO OTHERS FOR MANUFACTURING OR ANY OTHER PURPOSE WITHOUT WRITTEN PERMISSION FROM WILDER TECHNOLOGIES.

REVISIONS				
REV	AUTH	DESCRIPTION	APVD DATE	CHK DATE
A	ECNXXXX	PRELIMINARY RELEASE		9/18/12

F
E
D
C
B
A

F
E
D
C
B
A



- NOTE: UNLESS OTHERWISE SPECIFIED
1. INTERPRET DIMENSIONS AND TOLERANCES PER ANSI Y14.5.
 2. REFER TO THE USER MANUAL FOR DETAILED MECHANICAL AND ELECTRICAL SPECIFICATIONS.
 3. A SPARES KIT CONTAINING AN INTERFACE RECEPTACLE AND CONTACT PINS IS SUPPLIED FOR USERS.

UNLESS OTHERWISE SPECIFIED DIMENSIONS ARE INCHES (METRIC)		6101A East 18th St. Vancouver, WA 98661 Tel: 360-859-3041 Fax: 360-859-3105 www.wilder-tech.com	
XXX + .005 + .127 +	.XX + .01 + .25 +	DRAWN BY: W. STANLEY DATE: 9/18/12	
.X + .12 + .3 +	ANGLE + 1° + 1°	CHECKED BY:	DATE:
MATERIAL:		APPROVED BY:	DATE:
DESCRIPTION: FINAL ASSEMBLY, QSFP+ 40Gb RECEPTACLE QSFP+-TPA40G-MCB-R			
FINISH:	SIZE PART NUMBER: D 600-1081-000	REV A	
SCALE: 1:1		DO NOT SCALE DRAWING SHEET 3 OF 3	