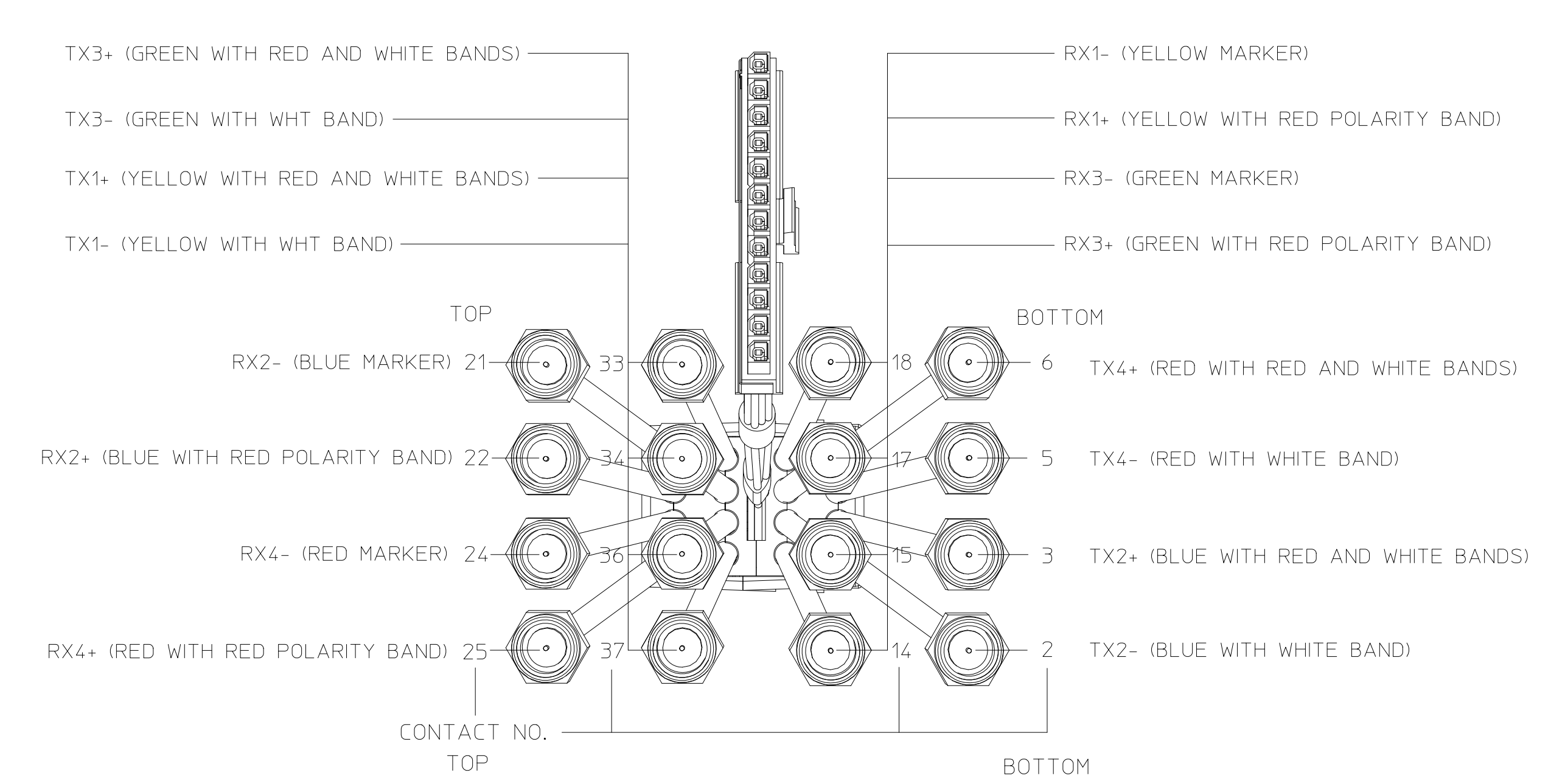
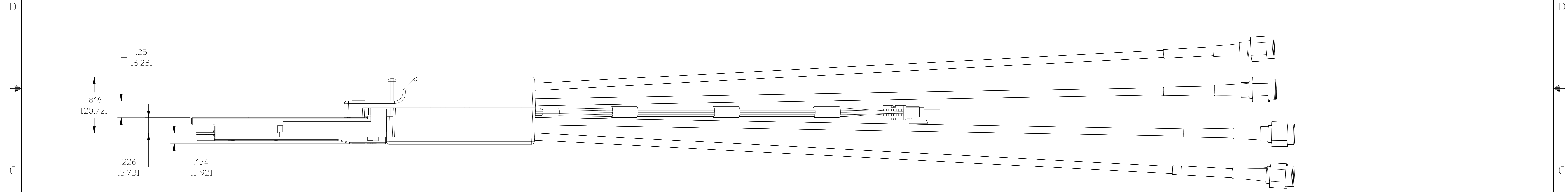
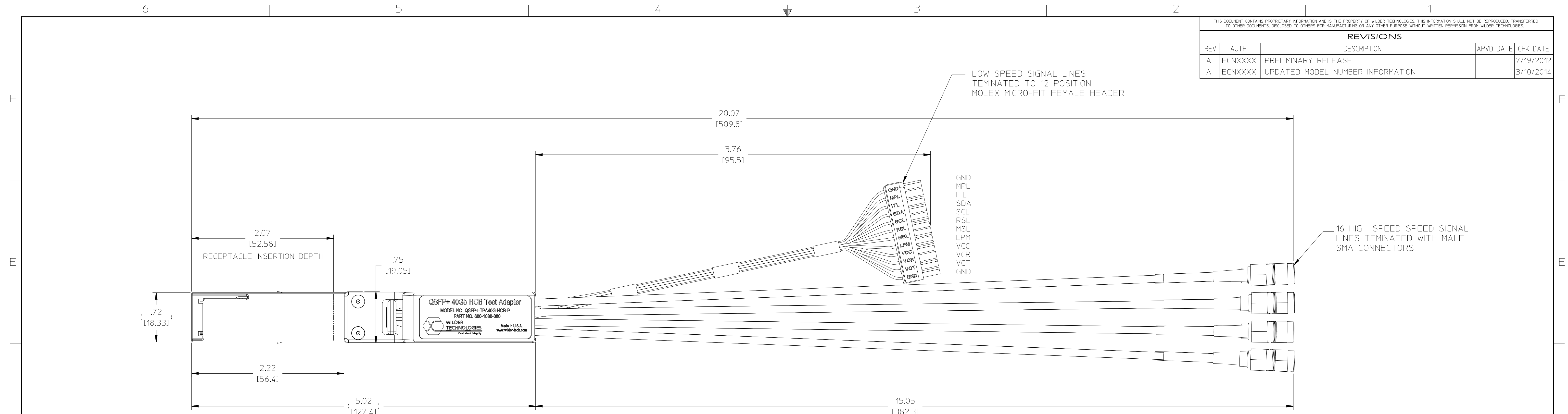


THIS DOCUMENT CONTAINS PROPRIETARY INFORMATION AND IS THE PROPERTY OF WILDER TECHNOLOGIES. THIS INFORMATION SHALL NOT BE REPRODUCED, TRANSFERRED TO OTHER DOCUMENTS, DISCLOSED TO OTHERS FOR MANUFACTURING OR ANY OTHER PURPOSE WITHOUT WRITTEN PERMISSION FROM WILDER TECHNOLOGIES.

| REVISIONS | | | | |
|-----------|---------|----------------------------------|-----------|-----------|
| REV | AUTH | DESCRIPTION | APVD DATE | CHK DATE |
| A | ECNXXXX | PRELIMINARY RELEASE | | 7/19/2012 |
| A | ECNXXXX | UPDATED MODEL NUMBER INFORMATION | | 3/10/2014 |



- NOTE: UNLESS OTHERWISE SPECIFIED
1. INTERPRET DIMENSIONS AND TOLERANCES PER ANSI Y14.5.
 2. REFER TO USER MANUAL FOR DETAILED MECHANICAL AND ELECTRICAL SPECIFICATIONS.
 3. THIS ASSEMBLY IS SUPPLIED WITH SPARE MATING MALE LOW SPEED INTERFACE CONNECTOR AND PINS FOR USER CONFIGURATION.

| | | | | | |
|---|-------------------|--|--|--|--|
| UNLESS OTHERWISE SPECIFIED DIMENSIONS ARE INCHES (METRIC) | | WILDER TECHNOLOGIES | | 6101A East 18th St Vancouver, WA 98661 | |
| .XXX + .005 + .127 + | .XX + .01 + .25 + | DRAWN BY: W. STANLEY | | DATE: 7/19/2012 | |
| .X + .12 + .3 + | ANGLE = 1° 1° | CHECKED BY: | | DATE: | |
| MATERIAL: | | APPROVED BY: | | DATE: | |
| FINISH: | | DESCRIPTION: FINAL ASSEMBLY QSFP+ 40Gb PLUG QSFP+-TPA40G-HCB-P | | | |
| SIZE PART NUMBER: D 600-1080-000 | | REV: A | | SCALE: 1:1 DO NOT SCALE DRAWING SHEET 1 OF 2 | |