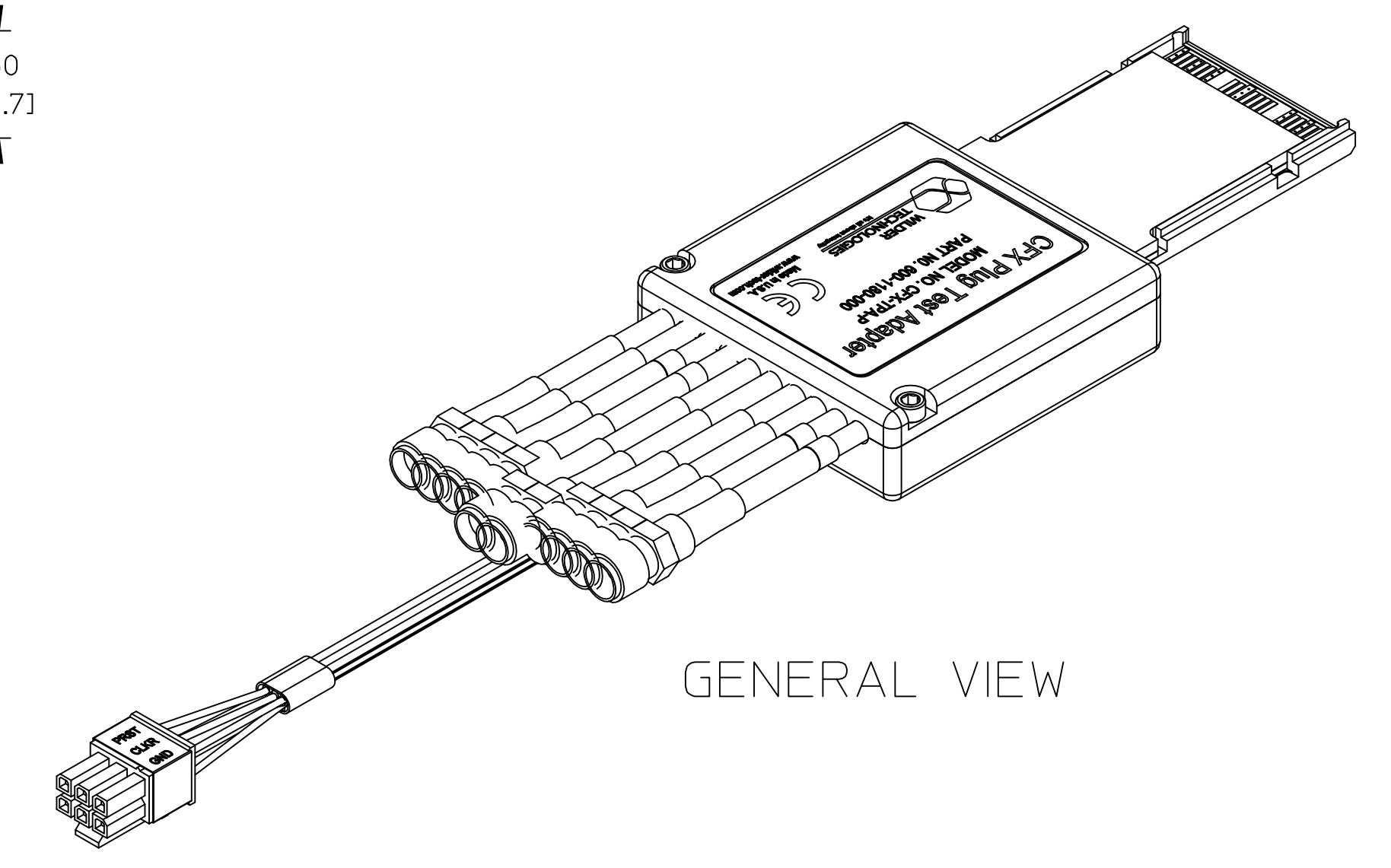
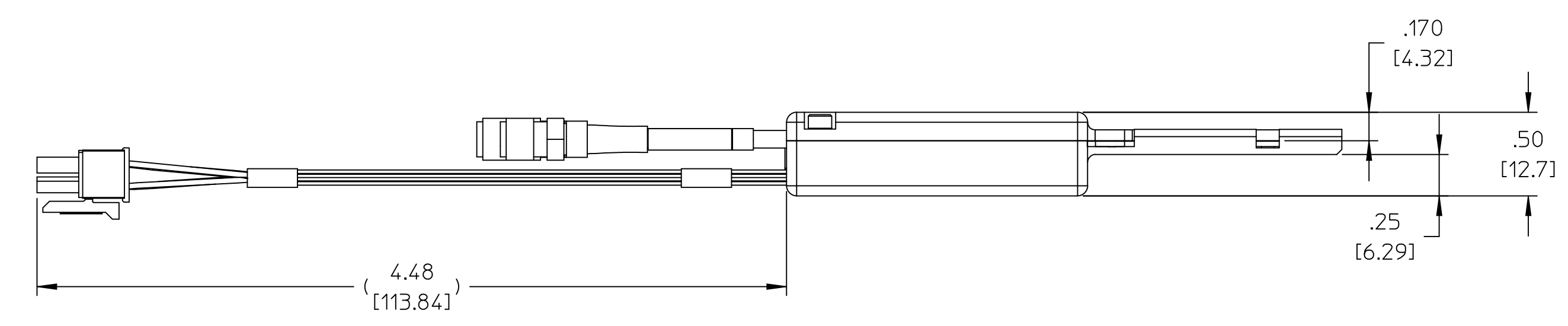
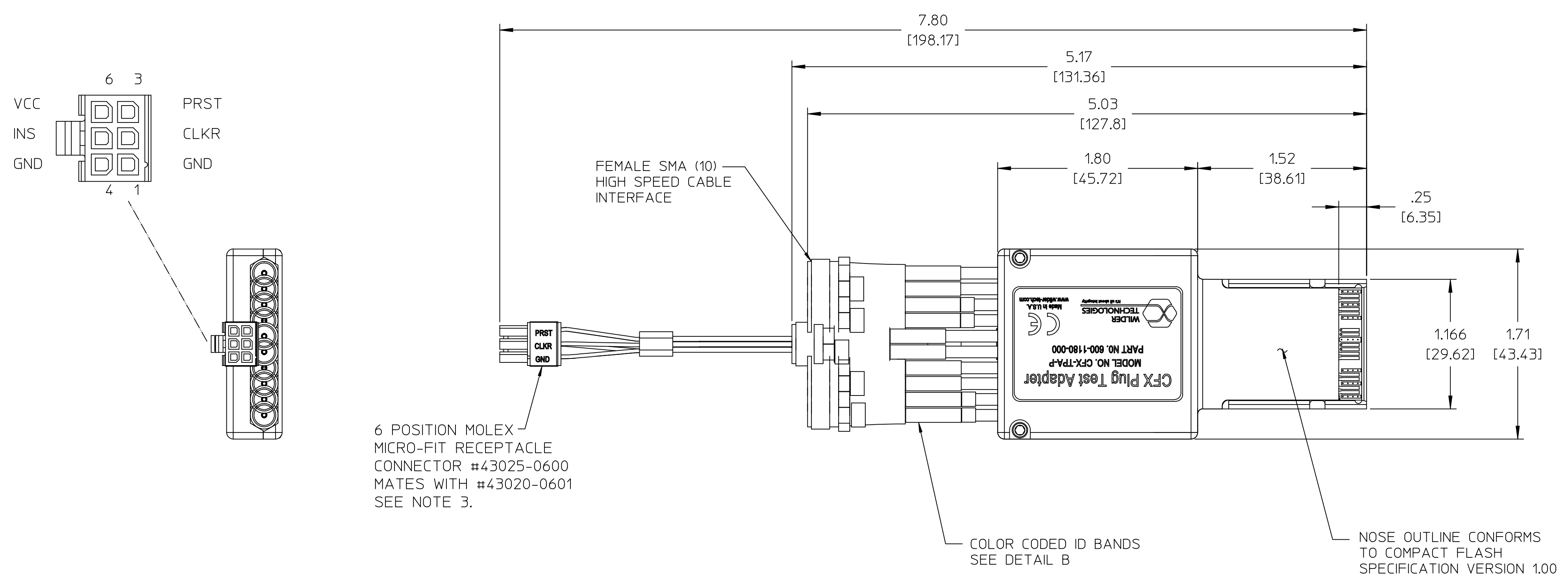


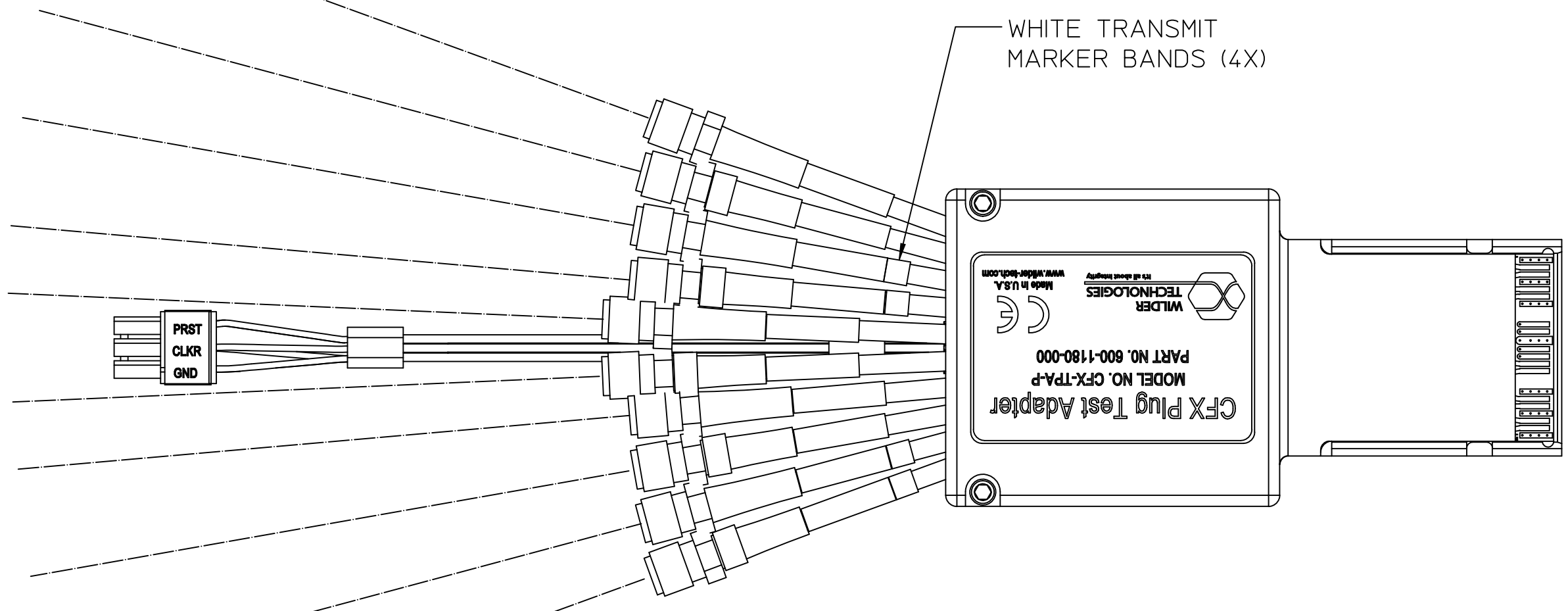
THIS DOCUMENT CONTAINS PROPRIETARY INFORMATION AND IS THE PROPERTY OF WILDER TECHNOLOGIES. THIS INFORMATION SHALL NOT BE REPRODUCED, TRANSFERRED TO OTHER DOCUMENTS, DISCLOSED TO OTHERS FOR MANUFACTURING OR ANY OTHER PURPOSE WITHOUT WRITTEN PERMISSION FROM WILDER TECHNOLOGIES.

REVISIONS				
REV	AUTH	DESCRIPTION	APVD DATE	CHK DATE
A	XXXX	INITIAL RELEASE	WS	7/24/2019
A	XXXX	UPDATED TO 3 INCH CABLING	WS	9/24/2019
B	ECN1028	UPDATED HOUSING AND CIRCUIT BOARD ASSY TO INCREASE SHOUT DEPTH TO 1.52	WS	1/30/2023



GENERAL VIEW

- HOST PER1- (GREEN HEAT SHRINK)
- HOST PER1+ (GREEN HEAT SHRINK WITH RED POLARITY BAND)
- HOST PET1- (GREEN HEAT SHRINK WITH WHITE TRANSMIT MARKER)
- HOST PET1+ (GREEN HEAT SHRINK WITH RED POLARITY BAND) AND WHITE TRANSMIT MARKER
- HOST CLK- (WHITE HEAT SHRINK)
- HOST CLK+ (WHITE HEAT SHRINK WITH RED POLARITY BAND)
- HOST PER0- (YELLOW HEAT SHRINK)
- HOST PER0+ (YELLOW HEAT SHRINK WITH RED POLARITY BAND)
- HOST PET0- (YELLOW HEAT SHRINK WITH WHITE TRANSMIT MARKER)
- HOST PET0+ (YELLOW HEAT SHRINK WITH RED POLARITY BAND) AND WHITE TRANSMIT MARKER

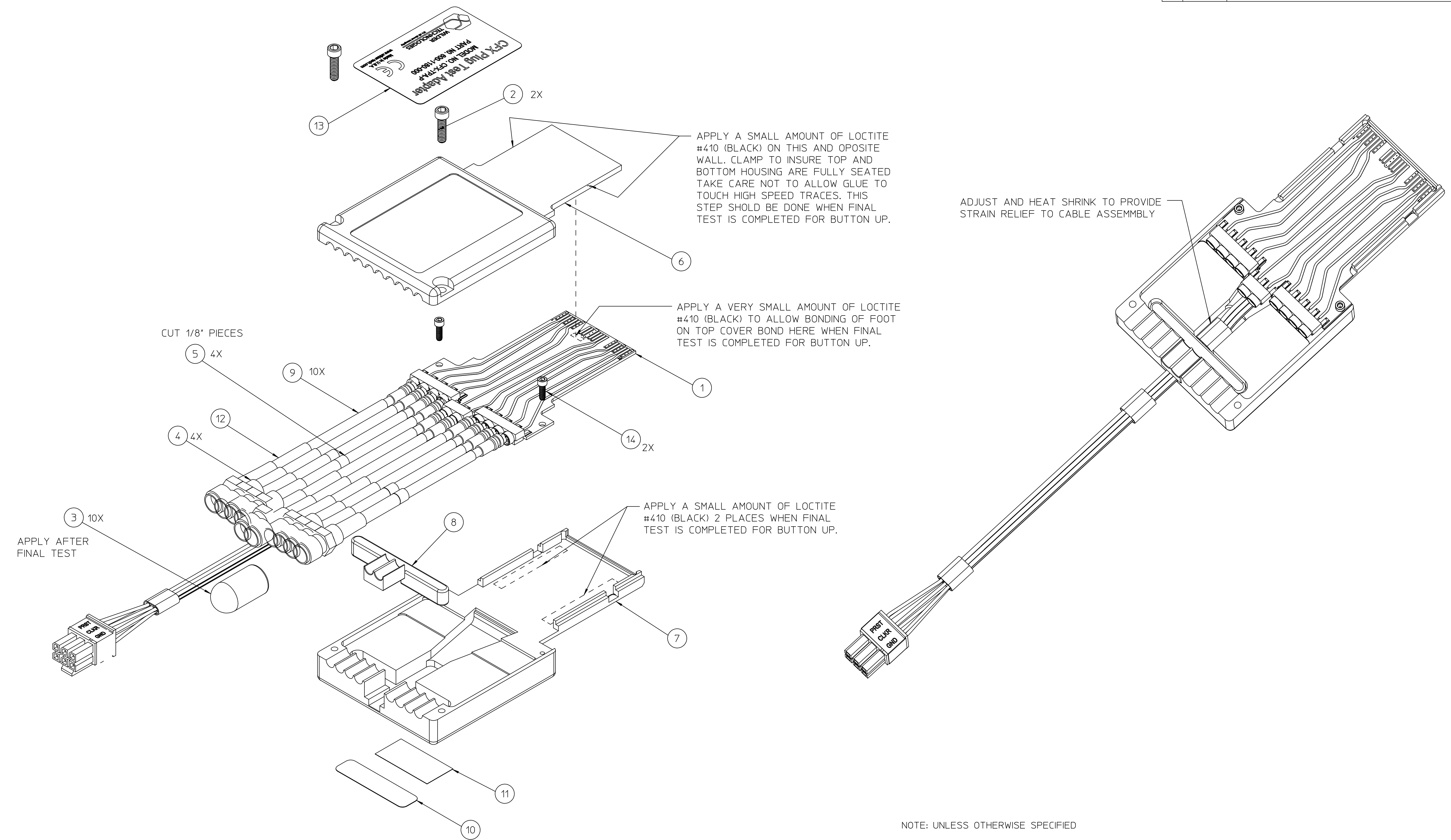


3. THIS ASSEMBLY IS SUPPLIED WITH A SPARE LOW SPEED MALE INTERFACE CONNECTOR AND PINS FOR USER CONFIGURATION.
 2. REFER TO THE USERS MANUAL FOR DETAILED MECHANICAL AND ELECTRICAL SPECIFICATIONS.
 1. INTERPRET DIMENSIONS AND TOLERANCES PER ANSI Y14.5.
- NOTE: UNLESS OTHERWISE SPECIFIED

UNLESS OTHERWISE SPECIFIED DIMENSIONS ARE INCHES (METRIC)		6101 A East 18th St Vancouver, WA 98661 Tel: 360-859-3041 Fax: 360-859-3105 www.wildertech.com	
XX + .005 + .127 +	XX + .01 + .25 +	DRAWN BY: W.STANLEY	DATE: 7/11/2019
X + .12 + .3 +	ANGLE + 1° + 1°	CHECKED BY:	DATE:
MATERIAL:		APPROVED BY:	
FINISH: NA		DESCRIPTION: REFERENCE ASSEMBLY, COMPACT FLASH EXPRESS PLUG, CFX-TPA-P	
SIZE: D	PART NUMBER: 600-1180-000	REV: B	SCALE: 15:1 DO NOT SCALE DRAWING SHEET 1 OF 2

THIS DOCUMENT CONTAINS PROPRIETARY INFORMATION AND IS THE PROPERTY OF WILDER TECHNOLOGIES. THIS INFORMATION SHALL NOT BE REPRODUCED, TRANSFERRED TO OTHER DOCUMENTS, DISCLOSED TO OTHERS FOR MANUFACTURING OR ANY OTHER PURPOSE WITHOUT WRITTEN PERMISSION FROM WILDER TECHNOLOGIES.

REVISIONS				
REV	AUTH	DESCRIPTION	APVD DATE	CHK DATE
A	XXXX	INITIAL RELEASE	WS	9/24/2019
B	ECN1028	UPDATED HOUSING AND CIRCUIT BOARD ASSY TO INCREASE SHOUT DEPTH TO 1.52	WS	1/30/23



EXPLODED ASSEMBLY BUILD DETAIL

- NOTE: UNLESS OTHERWISE SPECIFIED
1. INTERPRET DIMENSIONS AND TOLERANCES PER ANSI Y14.5.
 2. REFER ALL ITEM NUMBERS TO SEPARATE BILL OF MATERIAL, SAME NUMBER AND REVISION AS THIS DRAWING.
 3. THIS ASSEMBLY IS SUPPLIED WITH A SPARE LOW SPEED MALE INTERFACE CONNECTOR AND PINS FOR USER CONFIGUREATION. THESE PARTS SHOULD BE PACKAGE IN A PLASTIC BAG AND LABELED "SPARE PARTS 600-1180-000".
 4. TEST AND ACCEPT PER ELECTRICAL TEST PROCEDURE (ITEM XX).

UNLESS OTHERWISE SPECIFIED DIMENSIONS ARE INCHES (METRIC)		6101 A East 18th St Vancouver, WA 98661 Tel: 360-859-3011 Fax: 360-859-3105 www.wilder-tech.com	
.XX ± .005 ± .027 ±	.XX ± .01 ± .25 ±	DATE:	9/24/2019
.X ± .12 ± .3 ±	ANGLE ± 1° ± 1°	CHECKED BY:	W. STANLEY
MATERIAL:		APPROVED BY:	DATE:
SEE SEPARATE BILL OF MATERIAL		DESCRIPTION:	
		FINAL ASSEMBLY, COMPACT FLASH PLUG, CFX-TPA-P	
FINISH:	SIZE	PART NUMBER:	REV
	D	600-1180-000	B
SCALE: 2:1		DO NOT SCALE DRAWING SHEET 2 OF 2	