

OSFP

HCB (Host Compliance Board) MCB (Module Compliance Board)

FEATURES

- Meets IEEE 802.3ck, bs & cd Specifications
- Meets OIF CEI-112G-VSR-PAM4 CEI-56G-VSR-NRZ Specifications
- OSFP MSA Compliant

AVAILABLE CONFIGURATIONS

- 112G using 2.4mm RF Connectors
- 112G using 1.85mm RF Connectors

SYMBOL RATE

- 8x 56G NRZ
- 8x 112G PAM4

Included

- Protective Case

As our connected world demands higher bandwidth and increased data rates drive for innovation in both optical and electrical interconnects necessitates advanced test platforms.

Wilder Technologies has developed robust plug and receptacle test adapters to support OSFP device and host performance testing.

Wilder offers:

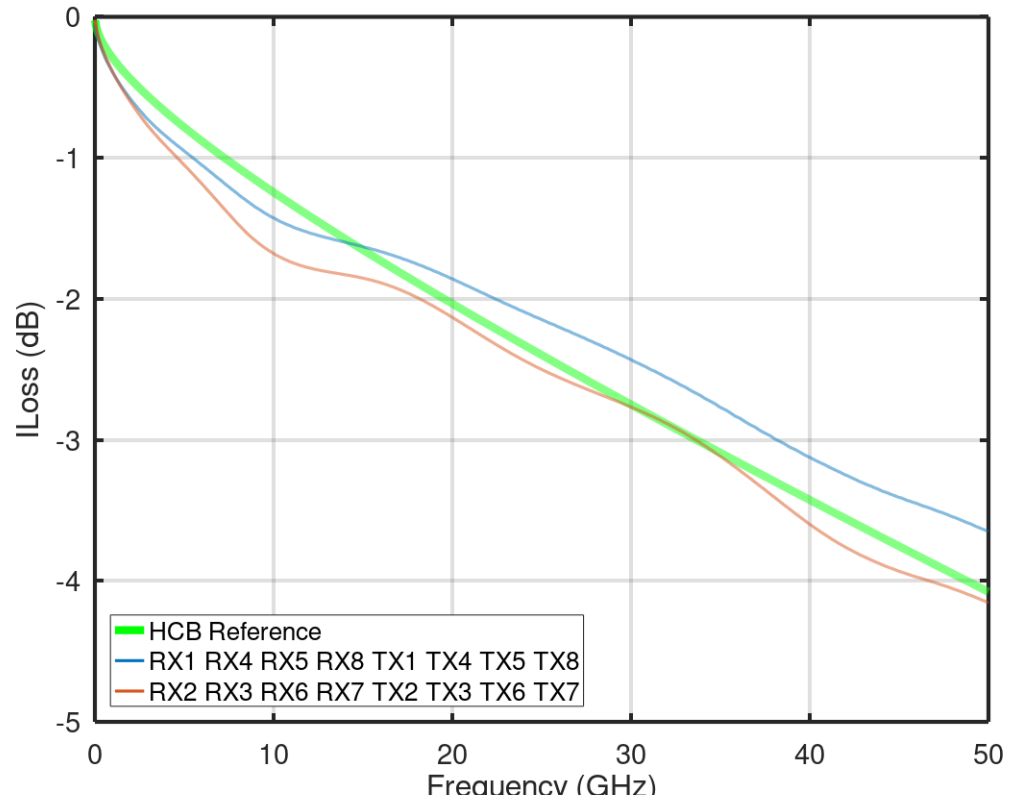
- HCB & MCB Test Adapters configured to support 50GHz testing (2.4mm RF connectors) or 70GHz testing (1.85mm RF connectors)
- Supports 56Gbaud, 112G PAM4 data rates over 8-channels.
- Low speed signal access via 14 position header
- User select power source via included power adapter or bench top power supply.
- Optional fan module to cool active devices up to 22W
- **Access to CMIS via Wilder CMIS GUI, included**
Read/Write access of low-speed i2c CMIS via USB port
DUT memory map loading and monitoring



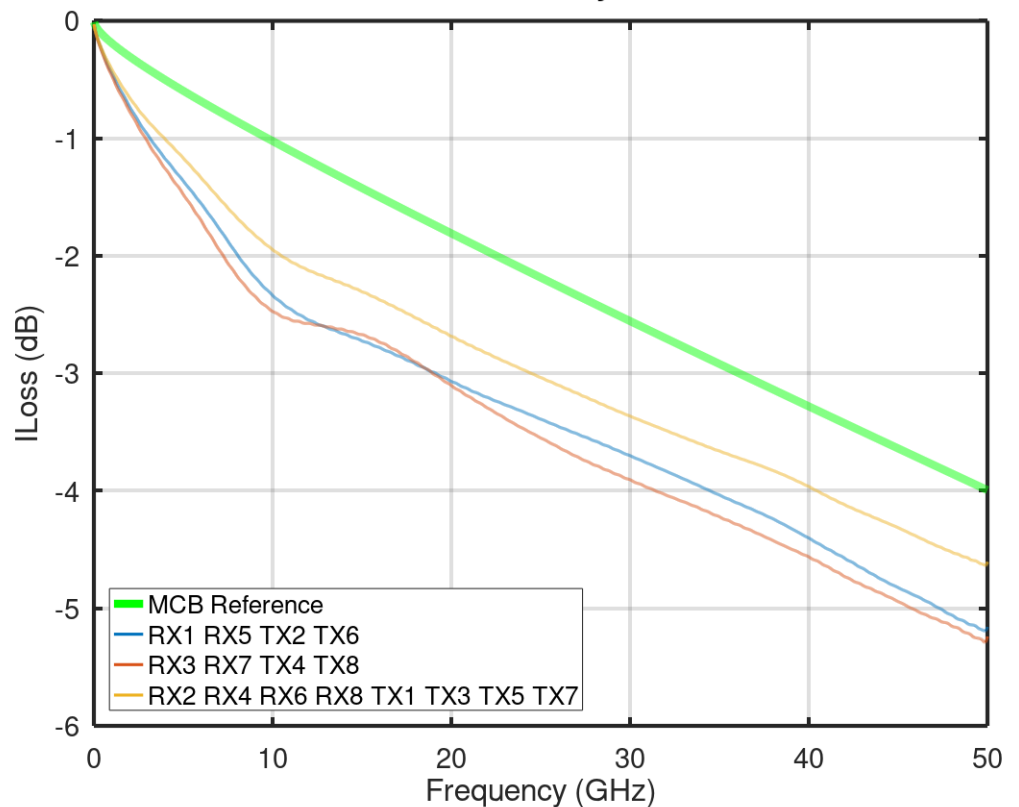


Individual Fixture Insertion Loss

OSFP-HCB-only-ILoss



OSFP MCB Only ILoss



Data-Rates Supported

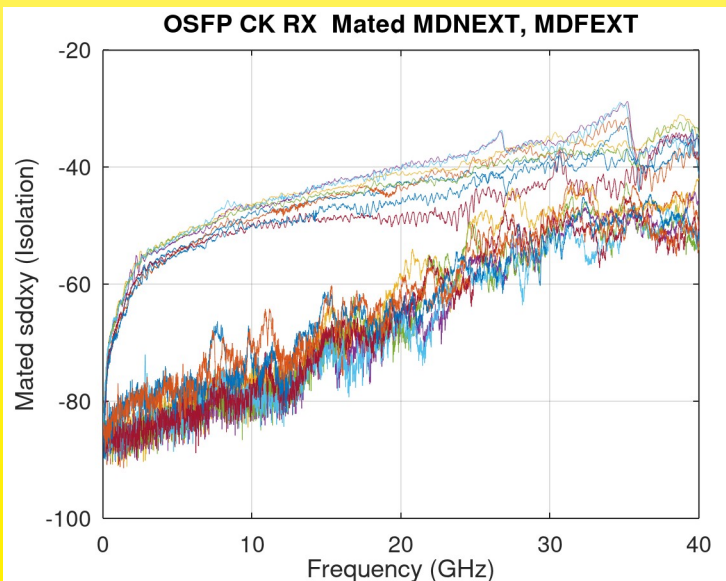
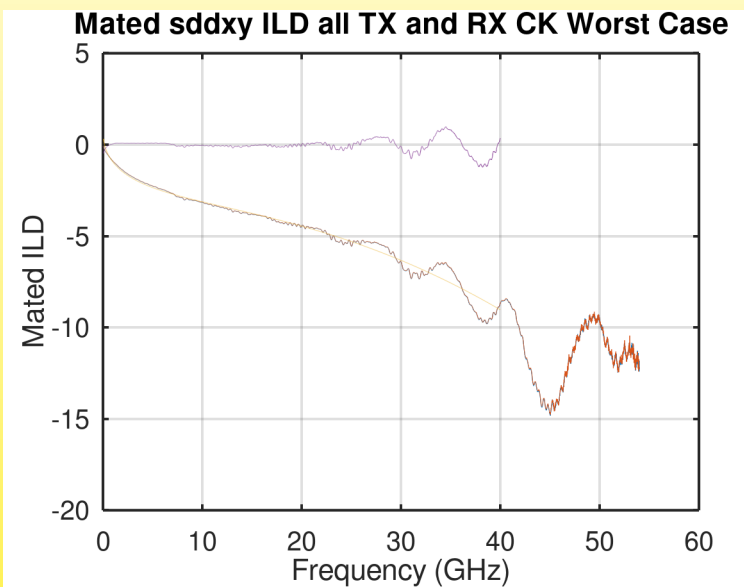
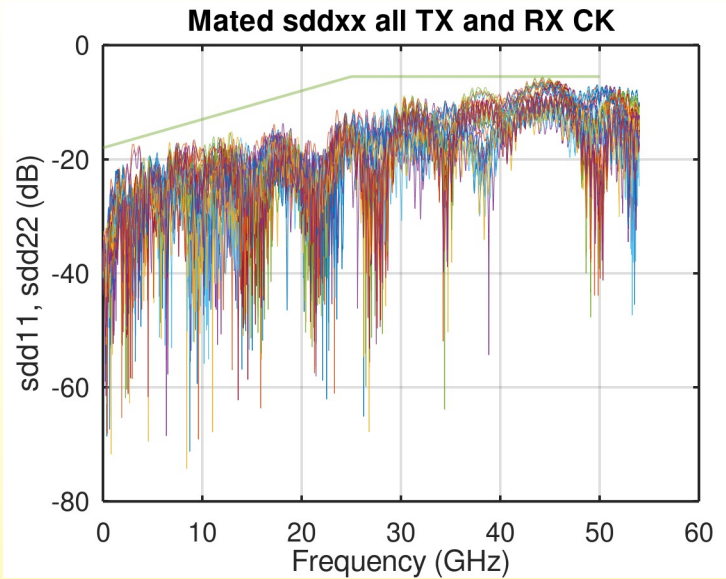
Testing of

- Transceiver Modules
- AOC's Active Optical Cables
- DAC's Direct Attach Cables
- AEC's Active Electrical Cables
- ACC's Active Copper Cables

MTF Return Loss is shown for information only.
ERL numbers represent worst case across 75
measured channels and is calculated with no
gating.

Worst case FOM ild is plotted and typical
results for all 16 channels are shown in this
table. FOM ild is calculated using IEEE
802.3ck and CEI VSR parameters.

Table illustrates ICN data calculated as out-
lined in 802.3CK for the TX victim responses.
Note that each row represents an ICN value as
each aggressor is added to the power sum.





HCB Configurations

- Full 8-Tx & 8-Rx
- Legacy Row Only
- DD Row Only
- Both Row Tx
- Both Row Rx

2.4mm Available Fixtures

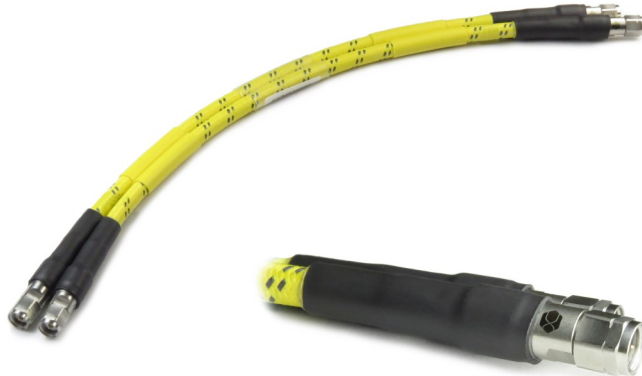
Wilder PN	Model	Description
640-0935-100	OSFP-TPA2.4-HCB-P	OSFP-TPA2.4-HCB-P (HCB, 8-Channels, 5-inch 2.4mm Fem, 112G / 800G)
640-0935-130	OSFP-TPA2.4-HCB-RX-P	OSFP-TPA2.4-HCB-RX-P (HCB, 8-RX-Pairs, 5-inch 2.4mm Fem, 112G / 800G)
640-0935-140	OSFP-TPA2.4-HCB-TX-P	OSFP-TPA2.4-HCB-TX-P (HCB, 8-TX-Pairs, 5-inch 2.4mm Fem, 112G / 800G)
640-0937-100	OSFP-TPA2.4-MCB-R	OSFP-TPA2.4-MCB-R (MCB, 8-Channels, 5-inch 2.4mm Fem, 112G / 800G)
640-0938-100	OSFP-TPA2.4-MCB-RC	OSFP-TPA2.4-MCB-RC (MCB, 8-Channels, 5-inch 2.4mm Fem, 112G / 800G with Cooling Fan)

1.85mm Available Fixtures

Wilder PN	Model	Description
640-0935-200	OSFP-TPA1.85-HCB-P	OSFP-TPA1.85-HCB-P (HCB, 8-Channels, 5-inch 1.85mm Fem, 112G / 800G)
640-0935-230	OSFP-TPA1.85-HCB-RX-P	OSFP-TPA1.85-HCB-RX-P (HCB, 8-RX-Pairs, 5-inch 1.85mm Fem, 112G / 800G)
640-0935-240	OSFP-TPA1.85-HCB-TX-P	OSFP-TPA1.85-HCB-TX-P (HCB, 8-TX-Pairs, 5-inch 1.85mm Fem, 112G / 800G)
640-0937-200	OSFP-TPA1.85-MCB-R	OSFP-TPA1.85-MCB-R (MCB, 8-Channels, 5-inch 1.85mm Fem, 112G / 800G)
640-0938-200	OSFP-TPA1.85-MCB-RC	OSFP-TPA1.85-MCB-RC (MCB, 8-Channels, 5-inch 1.85mm Fem, 112G / 800G with Cooling Fan)

Recommended Accessories

Wilder PN	Model	Description
640-1011-000	OSFP-MCB-FAN-MOD	OSFP COOLING FAN MODULE ACCESSORY
415-0128-002	INST-CBL-1.85M-1.85M-300-1PR	Cable Set, Instrument, Matched-Pair 1.85mm Male to 1.85mm Male, 300mm
415-0128-102	INST-CBL-1.85M-1.85M-600-1PR	Cable Set, Instrument, Matched-Pair 1.85mm Male to 1.85mm Male, 600mm
415-0128-202	INST-CBL-1.85M-1.85M-900-1PR	Cable Set, Instrument, Matched-Pair 1.85mm Male to 1.85mm Male, 900mm



WILDER TECHNOLOGIES PRODUCT LIST

Look to Wilder Technologies for your interconnect validation, compliance and certification requirements.

"It's all about integrity"

A Global Leader — Providing evaluation and test vehicles for today's and tomorrow's interconnect technology.

Signal Integrity — High Speed, Low Noise, Ultra-low Insertion and Return Loss.

See what's being tested not the test equipment.

Optimized Signal Path — We provide the cleanest possible conduit to provide you with the cleanest possible signal.

For more product details, visit www.wilder-tech.com



Contact us for more product or company information:

Design Center:

Wilder Technologies
700 Washington Street
Suite 508
Vancouver, WA 98660

Manufacturing Site:

Wilder Technologies
6101A East 18th Street
Vancouver, WA 98661

www.wilder-tech.com
Ph: 360-859-3041
Fx: 360-859-3105
Em: sales@wilder-tech.com

© Copyright 2022,
Wilder Technologies.