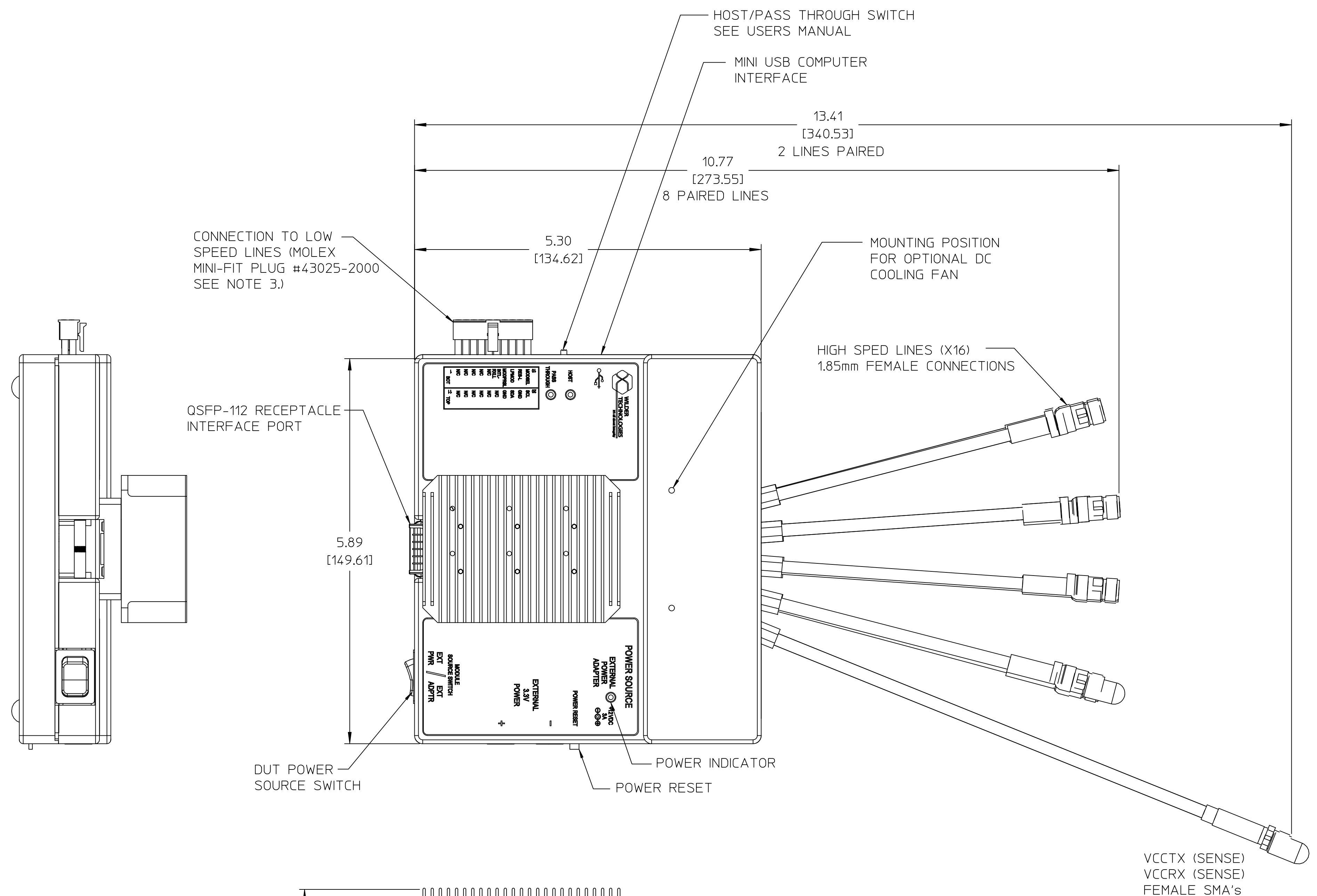


THIS DOCUMENT CONTAINS PROPRIETARY INFORMATION AND IS THE PROPERTY OF WILDER TECHNOLOGIES. THIS INFORMATION SHALL NOT BE REPRODUCED, TRANSFERRED TO OTHER DOCUMENTS, DISCLOSED TO OTHERS FOR MANUFACTURING OR ANY OTHER PURPOSE WITHOUT WRITTEN PERMISSION FROM WILDER TECHNOLOGIES.

REVISIONS				
REV	AUTH	DESCRIPTION	APVD DATE	CHK DATE
A	ECNXXXX	INITIAL RELEASE		3/28/22



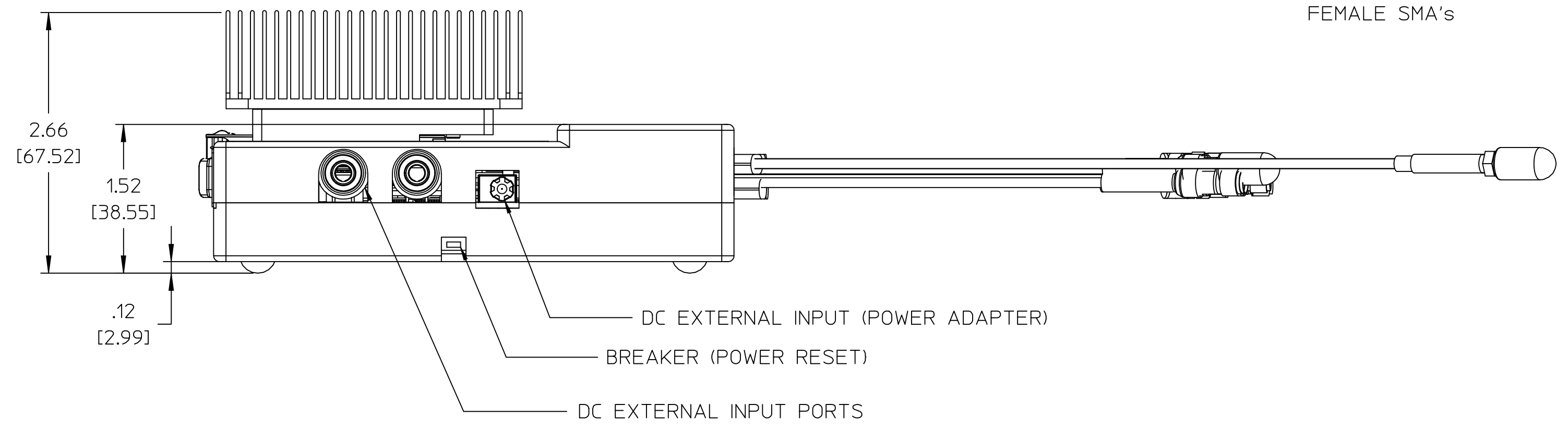
- | | |
|--------------------------------------|------------------------------------|
| TX1- YELLOW WITH WHITE BAND | TX2- BLUE WITH WHITE BAND |
| TX1+ YELLOW WITH RED AND WHITE BANDS | TX2+ BLUE WITH WHITE AND RED BANDS |
| TX3- GREEN WITH WHITE BAND | TX4- RED WITH WHITE BAND |
| TX3+ GREEN WITH RED AND WHITE BANDS | TX4+ RED WITH WHITE AND RED BANDS |
| RX4+ RED WITH RED BAND | RX3+ GREEN WITH RED BAND |
| RX4- RED | RX3- GREEN |
| RX2+ BLUE WITH RED BAND | RX1+ YELLOW WITH RED BAND |
| RX2- BLUE | RX1- YELLOW |

PORT CODING
UPPER 16 LINES

NOTE:
RED BAND = POSITIVE
WHITE BAND = TRANSMIT

PORT CODING
LOWER 8 LINES

NOTE:
RED BAND = POSITIVE
WHITE BAND = TRANSMIT



- NOTE: UNLESS OTHERWISE SPECIFIED
- INTERPRET DIMENSIONS AND TOLERANCES PER ANSI Y14.5.
 - FOR DETAILED MECHANICAL AND ELECTRICAL SPECIFICATIONS REFER TO USERS MANUAL 910-0071-000.
 - THIS TEST ADAPTER IS SUPPLIED WITH A SEPARATE 20 POSITION RECEPTACLE AND RECEPTACLE PINS TO ALLOW USERS TO CONNECT TO THIS ASSEMBLY.
MOLEX HOUSING NUMBER - 43025-2000
MOLEX CONTACT PINS - 43030-0011
 - LEAD-FREE PROCESSES REQUIRED. MUST COMPLY WITH EC DIRECTIVE 2011/65/EU AND AMENDMENT DIRECTIVE (EU) 2015/863(RoHS2 DIRECTIVE) RESTRICTIVE USE OF HAZARDOUS SUBSTANCES.

UNLESS OTHERWISE SPECIFIED DIMENSIONS ARE INCHES (METRIC)		6101 A East 18th St Vancouver, WA 98661 Tel: 360-859-3041 Fax: 360-859-3105 www.wilder-tech.com	
.XX + .005 + .127 +	.XX + .01 + .25 +	DRAWN BY: W. STANLEY	DATE: 3/28/22
.X + .12 + .3 +	ANGLE + 1° + 1°	CHECKED BY:	DATE:
MATERIAL:		APPROVED BY:	DATE:
DESCRIPTION: FINAL ASSEMBLY, QSFP-112 MCB, 400G, 1.85mm INTERFACE CUSTOMER REFERENCE DRAWING			
FINISH:	SIZE PART NUMBER: D 600-1225-200	REV A	
SCALE: 1:1		DO NOT SCALE DRAWING	SHEET 1 OF 2