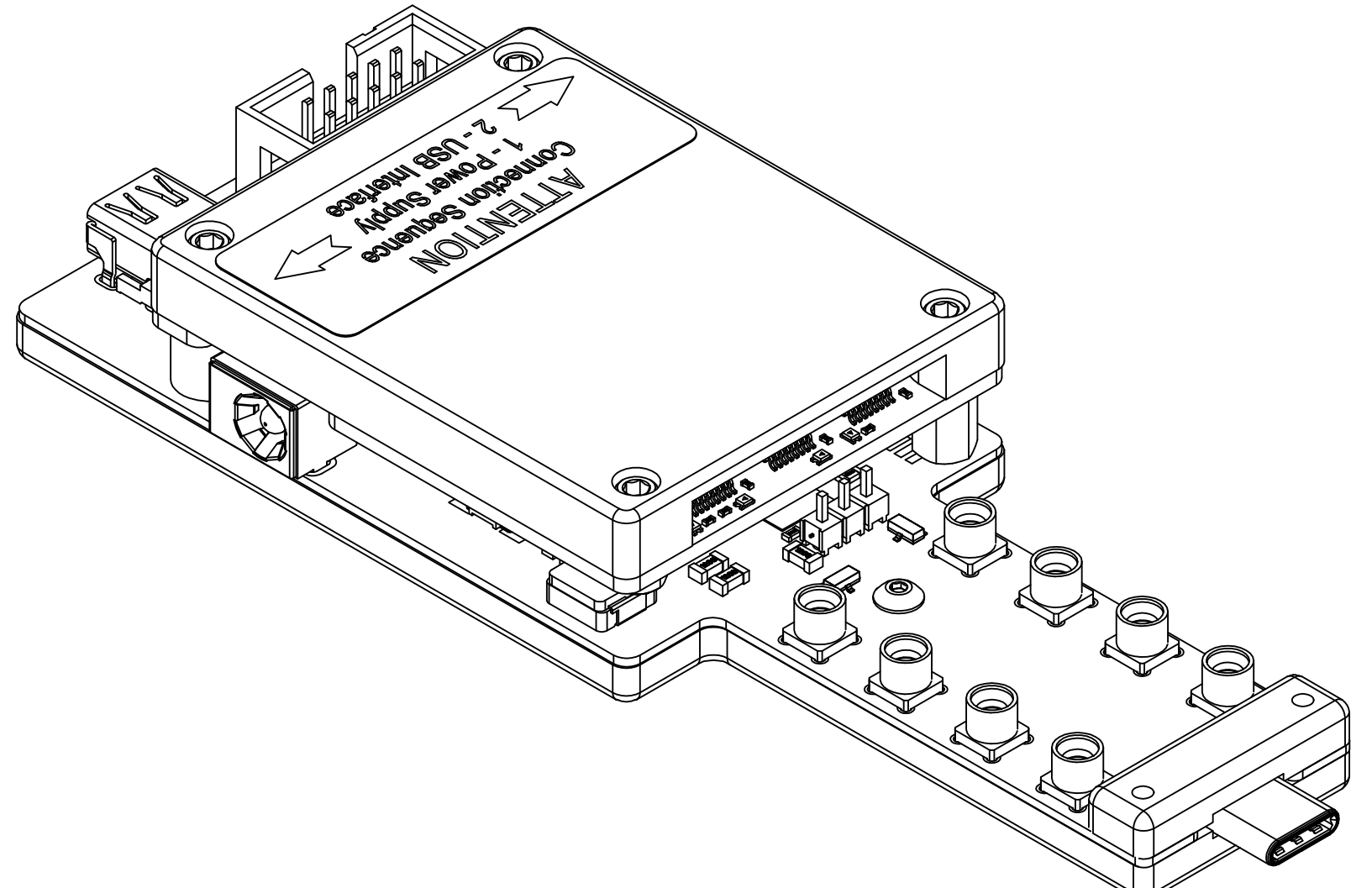
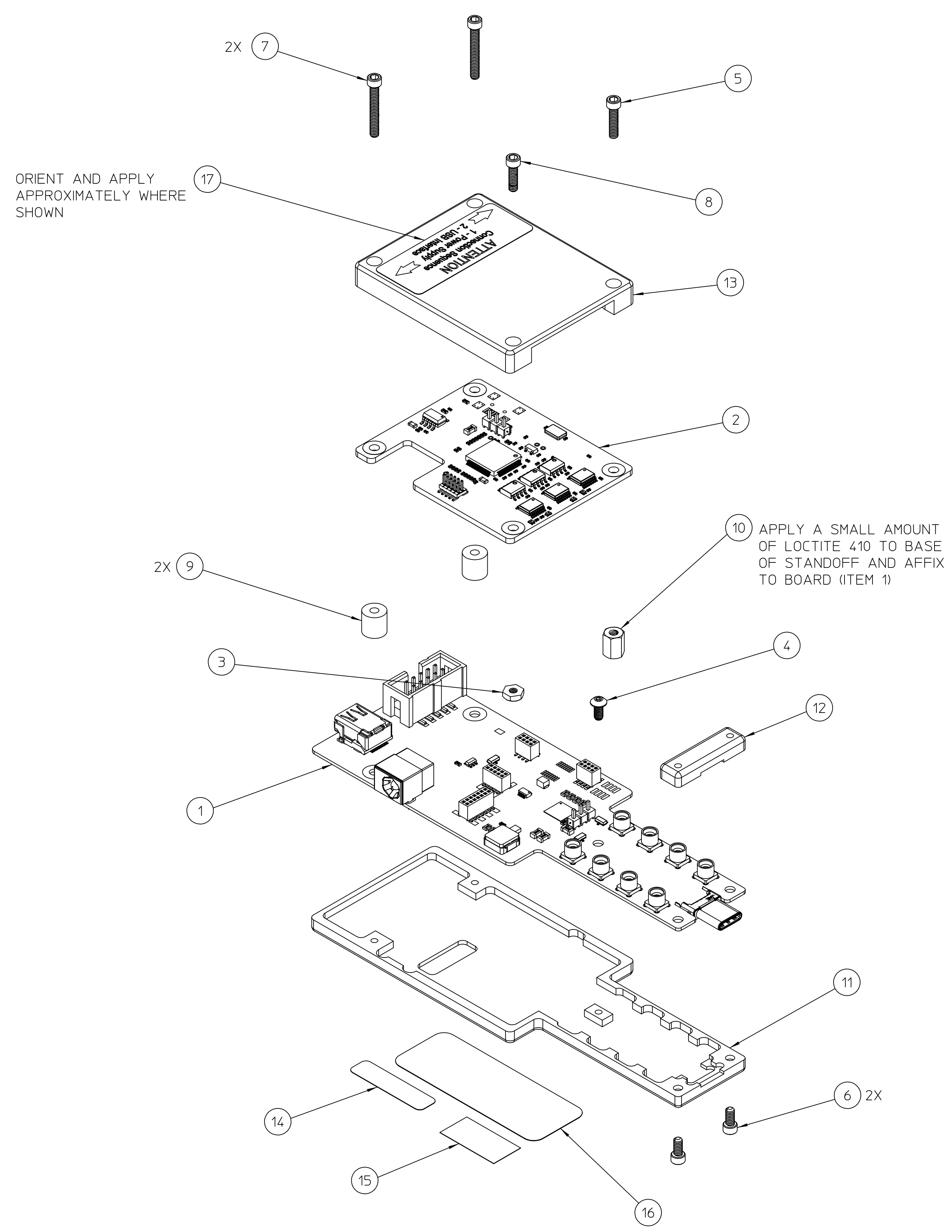


THIS DOCUMENT CONTAINS PROPRIETARY INFORMATION AND IS THE PROPERTY OF WILDER TECHNOLOGIES. THIS INFORMATION SHALL NOT BE REPRODUCED, TRANSFERRED TO OTHER DOCUMENTS, DISCLOSED TO OTHERS FOR MANUFACTURING OR ANY OTHER PURPOSE WITHOUT WRITTEN PERMISSION FROM WILDER TECHNOLOGIES.

REVISIONS				
REV	AUTH	DESCRIPTION	APVD DATE	CHK DATE
A	XXXX	INITIAL RELEASE	TD	8/2/2017



GENERAL VIEW
SCALE 2:1

- NOTE: UNLESS OTHERWISE SPECIFIED
- REFER ALL ITEM NUMBERS TO SEPARATE BILL OF MATERIAL. SAME NUMBER AND REVISION AS THIS DRAWING.
 - INTERPRET DIMENSIONS AND TOLERANCES PER ANSI Y14.5.
 - LEAD-FREE PROCESSES REQUIRED. MUST COMPLY WITH EC DIRECTIVE 2011/65/EU (RoHS2 DIRECTIVE) RESTRICTIVE USE OF HAZARDOUS SUBSTANCES.

EXPLODED VIEW

UNLESS OTHERWISE SPECIFIED DIMENSIONS ARE INCHES (METRIC)		6101A East 18th St. Vancouver, WA 98661 Tel: 360-859-3041 Fax: 360-859-3105 www.wilder-tech.com	
XXX + .005 + .127 +	XX + .01 + .25 +	DRAWN BY: T. DELUCCO	DATE: 8/2/2017
X + .12 + .3 +	ANGLE + 1° + 1°	CHECKED BY:	DATE:
MATERIAL:	APPROVED BY:	DESCRIPTION:	
SEE NOTE 1		FINAL ASSY, TBTCAM TYPE-C Plug TPA, INTEL 21A-00057 W/MEZZANINE	
FINISH:	SIZE	PART NUMBER:	REV
NONE	D	600-1139-250	A
SCALE: 1:1		DO NOT SCALE DRAWING SHEET 1 OF 1	